

Fallow rail ground Betzdorf

Feasibility study

Municipal development measure

Fallow rail ground Betzdorf
(completed)

Location: Betzdorf, Germany

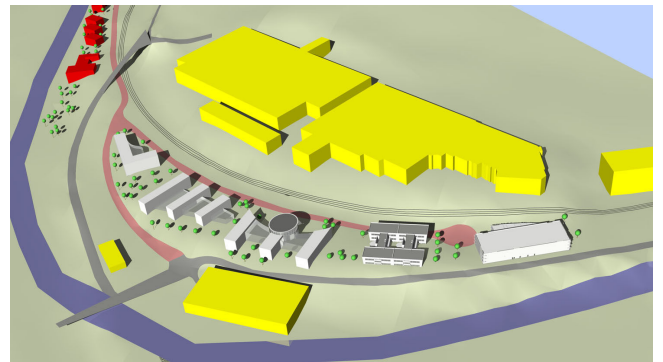
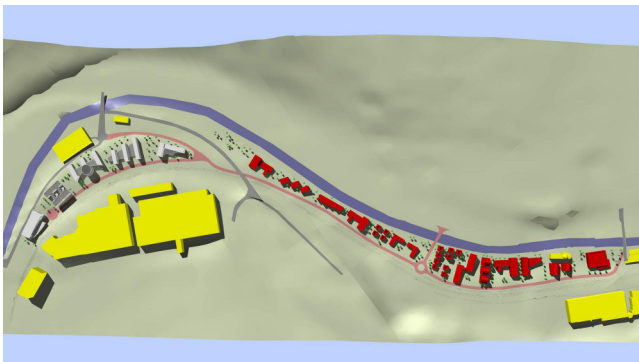
Client:

Betzdorf Municipality

57518 Betzdorf, Germany

Areas:

1. construction stage: 11 acres / 53,000 sq yds
(44,000 sqm/4.40 hectare)
2. construction stage : 13 acres (63,000 sq yds)
(53,000 sqm / 5.30 hectare)
3. construction stage : 14 acres (66,000 sq yds)
(55,000 sqm / 5.50 hectare)



PISKE+PARTNER

Architecture and urban design

Wilhelmstrasse 30

57518 Betzdorf

Germany

Udo Piske, architect, urban planner

Ralf Utsch, architect

Phone +49 (0) 2741 925-0

Fax +49 (0) 2741 4860

Mail Info@PiskeundPartner.de

Web www.PiskeundPartner.de