



Gross floor area: 377,000 sq ft (35,000 sqm)
 Stories: 5
 Cost of structure:
 € 30m in total
 € 79.- per square foot (€ 850.- per sqm)

Cost-related special features:
 Precast concrete parts with insulating plaster
 Air conditioning
 Underground parking



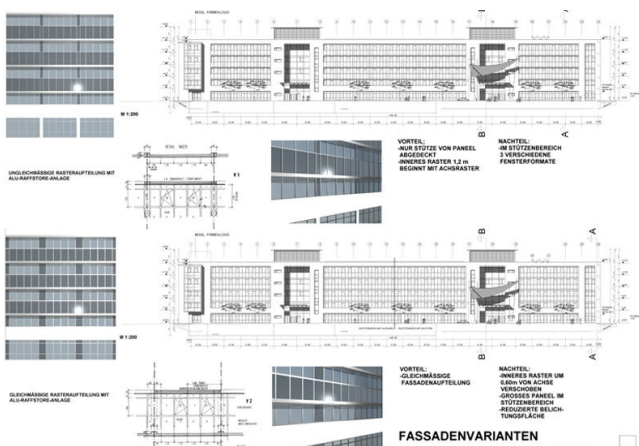
Hewlett-Packard German Headquarter

Office building in Böblingen Business Park with Hewlett-Packard Headquarters Germany

Location:
 Böblingen Technology and Business Park,
 Stuttgart area, Germany

Building owner:
 Project-Construct
 Gerbermühlstr. 32
 60594 Frankfurt on Main
 Germany

Year of construction 2003



PISKE+PARTNER
 Architecture and urban design
 Wilhelmstrasse 30
 57518 Betzdorf
 Germany

Udo Piske, architect, urban planner
 Ralf Utsch, architect

Phone +49 (0) 2741 925-0
 Fax +49 (0) 2741 4860
 Mail Info@PiskeundPartner.de
 Web www.PiskeundPartner.de