

Al Ghadeer

Housing project in Amman, Jordan

Master planning

Traffic planning

Infrastructure planning

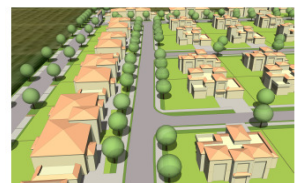
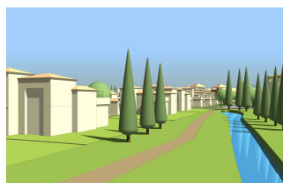
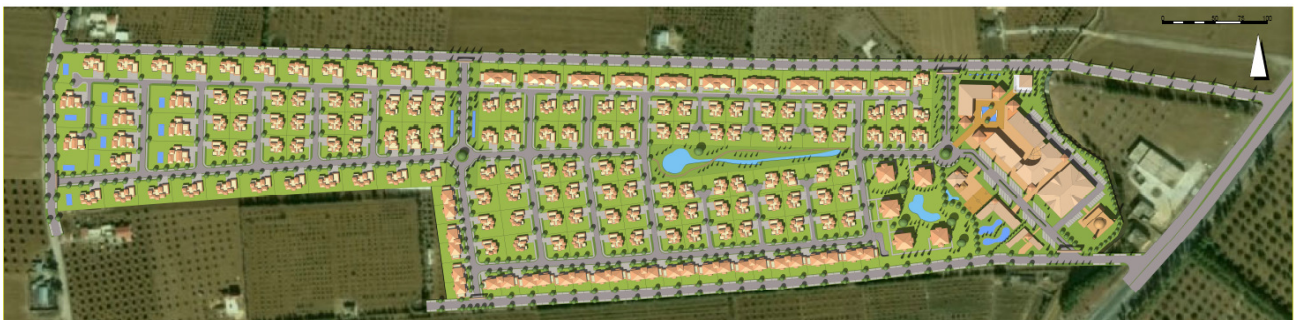
Execution planning of the villas



"A LIVING LIKE HOLIDAY"

AL GHADEER COMMUNITY - AMMAN 3D Masterplan

Scale 1:1000



PISKE+PARTNER

Architektur und Stadtplanung

Wilhelmstrasse 30

57518 Betzdorf

Deutschland

Udo Piske, Architekt und Stadtplaner

Ralf Utsch, Architekt

Fon +49 (0) 2741 925-0

Fax +49 (0) 2741 4860

Mail Info@PiskeundPartner.de

Web www.PiskeundPartner.de